

Product Overview

SE-1 GPS Module for the 500SE Camera



Description: The SE-1 GPS Module fastens to the 500SE digital camera to provide an integrated all-in-one geo-imaging device. The module utilizes state-of-the-art components to provide optimal reception and accuracy in all outdoor environments.

Specifications:



GPS	
Chipset	SiRF Star III WAAS/EGNOS enabled
Channels	20 channel all in view tracking
Position Accuracy	1-5 meters, 2D RMS, WAAS enabled
Acquisition Time	
Hot Start	1 Second (average)
Warm Start	38 Second (average)
Cold Start	42 Second (average)
Antenna	
Internal	Serantel Active GeoHelix antenna
External	Patch antenna – via external antenna port
Durability	Drop resistant and Weatherproof
Approvals	FCC - CE - VCCI

Ordering Information: Authorized 500SE Resellers may purchase the SE-1 online directly from the manufacturer at www.ekatechinc.com e-mail: sales@ekatechinc.com phone: 805-469-8884 (Available February 14th)

Installation:

1) Remove Hot Shoe Spring by sliding out.



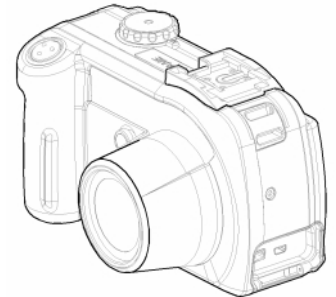
2) Remove Hot Shoe by unscrewing four screws



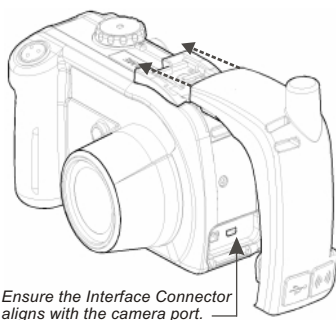
3) Attach Rail using the provided screws.



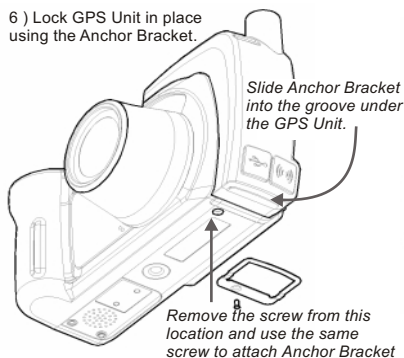
4) Camera with Rail attached.



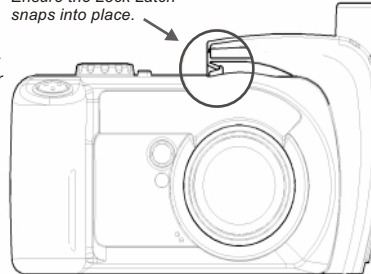
5) Align GPS Unit with Rail and slide on.



6) Lock GPS Unit in place using the Anchor Bracket.



Ensure the Lock Latch snaps into place.



Camera with GPS Unit attached.

