

# CartoPac Field Solutions for Invasive Weed Mapping

*More than GPS mapping Software*



CartoPac Field Solutions offers a complete management solution for the mapping, monitoring and treatment of invasive weed infestations. The CartoPac Invasive Weed Mapping Solution is designed for quick, easy and efficient field data collection returning quality results with no need for GIS training. This Invasive Weed Mapping solution offers organizations an inexpensive and flexible tool to assist in the overall mapping and management plan. Our solution offers a seamless transfer of information from the office, to the field and back using a simple web interface and easy to use mobile technology.



CartoPac Mobile running on a Trimble GPS device to illustrate the CartoPac Invasive Weed Mapping Solution that provides complete tools for the field user.

## Key Features:

- Powerful mobile mapping and data collection application that supports a variety of hand-held computers and GPS receivers.
- Data model complies with the **North American Invasive Plant Mapping Standards**.
- Expands upon the North American Invasive Plant Mapping Standard:
  - Supports both point and polygon shape layers
  - Supports examination, infestation and treatment history
- Easy-to-use data collection forms on the mobile device with drop-down lists populated from the database.
- Web based interface for quick data transfer to and from the mobile device.
- Automated tools for quick generation of reports and many different export options.
- Requires no GIS software yet fully compatible with ESRI's ArcGIS Software.
- Supports standard database formats such as Windows SQL Server and Oracle databases.
- Minimal training needed.

## Powerful Forms

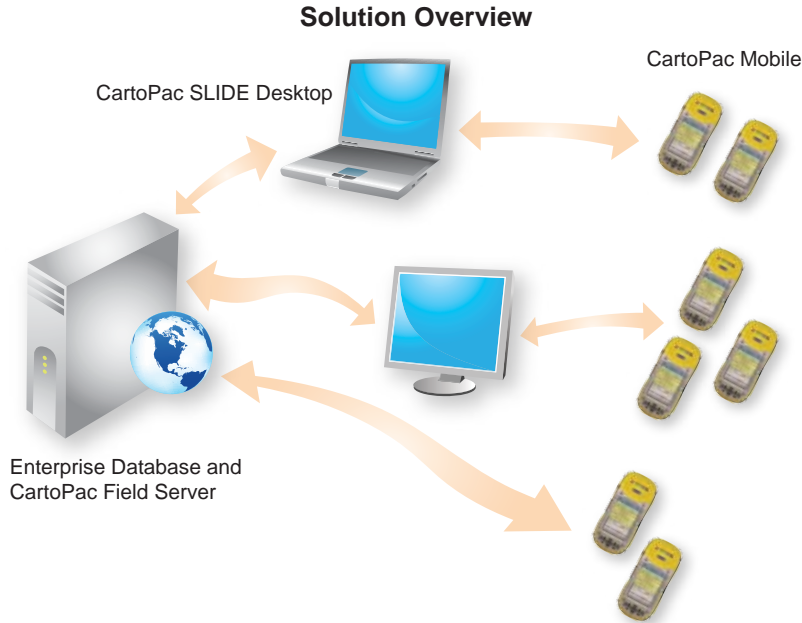
CartoPac Field Solutions offers mobile forms that provide a simple interface to allow field crews to quickly capture the "where and what" related to invasive weed mapping. These user friendly forms allow for fast data capture, saving time and money while maintaining quality and ensuring the proper data is collected.

- Increased productivity and significantly less training time for your field users.
- Data entry is fast and efficient, utilizing user-friendly tools that pre-populate known data and logically subset lists.
- Utilizing a relational data model to eliminate duplicate data entry and simplify data transfer into the office database.
- Data type constraints are enforced to ensure the highest quality data always comes back from the field.
- Full set of tools to meet a field users needs.

CartoPac Mobile provides forms that integrate both tabs and drop down selection for quick field data collection that works for your company's workflow.

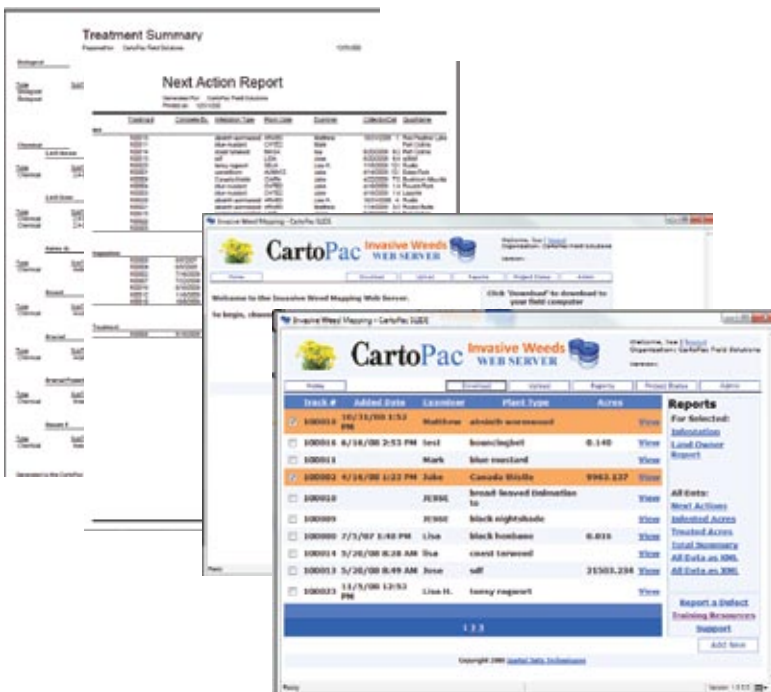
## Fast, Efficient, & Powerful Mobile GIS

Field users find that the CartoPac Field Solutions Invasive Weed Mapping software is fast and efficient. The map view displays vector data complete with background imagery. Whether field users need to navigate to existing infestations, or collect new data by using the GPS, their tasks can be completed with ease. CartoPac Field Solutions specializes in field data collection tools to bring the highest quality solutions to field users in a very easy to use format.



## Superb Data Integrity, Painless Data Merging

When the field user has completed the data collection, they upload the newly collected data back from the mobile device with an effortless process. After the data is uploaded via the simple web interface, information can be exported into many familiar formats to use in reports, mapping, or GIS analysis.



## Field Computer & Hardware Support:

CartoPac Field Solutions supports a full range of mobile computers, mobile operating systems, and other field data collection tools.

- Windows Mobile 5/6, and Windows XP Tablet Operating Systems
- Supports Relational Data Models
- Supports both spatial and non-spatial tables
- Trimble GPS driver enables the collection, export, and merging of corrected GPS data into the database
- GPS messaging/display for predicted post processing and signal strength
- In-field digital photo support
- Laser range finder support
- NMEA GPS support

## CompassTools

Map it, Design it, Find it, Build it, Track it  
**"Dedicated to GIS since 1994"**

Sales, Support, Authorized Repair, Rental, Training

CO, WY, NE, NM, AZ, MN, SD, ND  
 (800) 728-5066 (toll free) [www.compasstoolsinc.com](http://www.compasstoolsinc.com)